

SEAN PATRICK IGNATIUS TARTAGLIA

MARIA, MATER GRATIAE

for Cantor, ATTB, Chant

2022



© 2022 Sean Tartaglia

CANTOR NOTATION

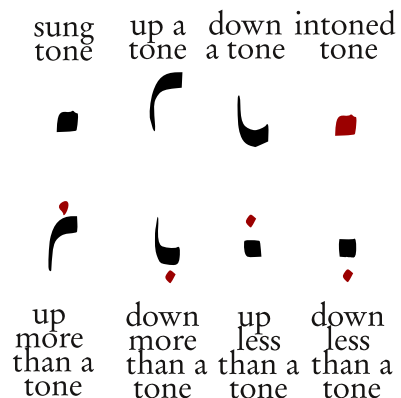
BLACK NEUMES ARE SUNG
TONES, MODIFIED BY RED
DIACRITICS

THEY ARE RELATIVE, I.E. A
NEUME IS SUNG IN RELATIONSHIP
TO THE ONE THAT CAME
BEFORE, E.G. UP AFTER **DO** IS
EQUIVALENT TO **RE**

RED NEUMES ARE INTONED
TONES

THEY ARE DETERMINED BY THE
PITCH OF THEIR RESPECTIVE
VOWELS.

A BLACK THAT FOLLOWS A **RED**
WILL BE SUNG ACCORDING TO
THE PITCH ESTABLISHED BY THE
RED.



TEXTS WITHOUT EITHER FORMS
OF NOTATION ARE SPOKEN

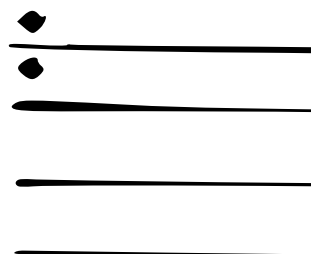
THERE IS NO TEMPO; RHYTHMIC
RATE IS DETERMINED BY THE
WORD

WHERE THERE IS NO WORD, THE
LENGTH OF SHORT AND LONG IS
TO BE DECIDED BY THE
PERFORMER

WHERE THERE IS A BREAK, THE
PAUSE SHOULD BE
INDETERMINATE

CHANT NOTATION

AS IN THE CANTOR, THE BLACK NEUME IS THE BASE VALUE; ITS PITCH IS DETERMINED BY WHERE THE **C CLEF** IS PLACED ON THE FOUR LINE STAFF.

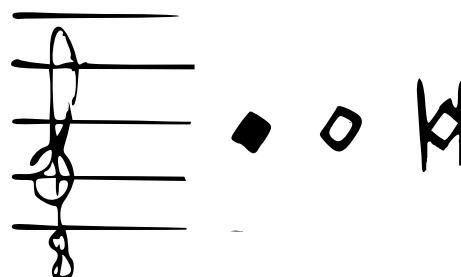


THERE IS NO TEMPO; RHYTHMIC RATE IS DETERMINED BY THE **WORD**

WHERE THERE IS A WORD, NEUMES WITHOUT DOTS ARE SHORT, NEUMES WITH DOTS ARE LONG

VOICE NOTATION

POLYPHONIC VOICES ARE PLACED ON THE FIVE LINE STAFF IN DIAMOND NEUME NOTATION, REPRESENTING SHORT, LONG, AND LONGEST IN A STANDARD **4:2:1** RATIO



THE TEMPO IS ACCORDING TO A SLOW TACTUS, WITHOUT ANY RHYTHMIC MENSURATION OR METRIC STRESS

MARIA, MATER GRATIAE,
MATER MISERICORDIAE,
TU ME AB HOSTE PROTEGE
ET HORA MORTIS SUSCIPE.

AMEN

שמע

שמע

A musical staff with a treble clef. The notes are G4, A4, B4, C5, B4, A4, G4. Below the staff, the fingering sequence is 1111 | C3 C03. A vertical line separates the two parts of the fingering.

A musical staff with a treble clef. The notes are G4, A4, B4, C5, B4, A4, G4. Below the staff, the fingering sequence is C03 1111 | C3 C03. A vertical line separates the two parts of the fingering.

A large fingering sequence: 1111 | C3. A vertical line separates the two parts.

A musical staff with a treble clef. The notes are G4, A4, B4, C5, B4, A4, G4. Below the staff, the fingering sequence is 1111 | C3 C03 1111 | C3. Vertical lines separate the four parts of the sequence.

A musical staff with a treble clef. The notes are G4, A4, B4, C5, B4, A4, G4. Below the staff, the fingering sequence is C03 1111 | C3 C03. A vertical line separates the two parts of the sequence.

li re

li re

МІСКОЗІКЕ

СОЗ ІІ РЕ

li re

i
 nie
 z
 h
 ö
 r
 t
 e
 z
 ö
 t
 e
 r
 e

11103 11 | 11103

11103 11 |

ethozik

11103 11103 11103

11103 11103 11103 11103

11103

11103

