

Handwritten text in a highly stylized, cursive script, possibly a mix of English and another language. The main text is written in thick black ink and includes the word "Conclusion" and the number "94".

Conclusion
94

Below the main text, there is a smaller, more intricate piece of handwriting, possibly a signature or a date range: 10/12 - 30/22.

SEAN PATRICK IGNATIUS TARTAGLIA

HORTUS CONCLUSUS

Cantor, Plainchant, Instruments

2022



© 2022 Sean Tartaglia

CANTOR NOTATION

BLACK SYLLABLES ARE SPOKEN TONES

RED SYLLABLES ARE INTONED TONES

THEY ARE DETERMINED BY THE SOUND OF THEIR RESPECTIVE VOWELS.

OVER SOME RED SYLLABLES THERE WILL APPEAR BLACK CANTILLATION MARKS WHICH REPRESENT VOCAL CONTOURS OF INDETERMINATE PITCH, LENGTH, AND BREADTH

CANTILLATION MARKS ALWAYS OCCUR AFTER THE SOUND OF THE VOWEL IS CLEARLY INTONED

THERE IS NO TEMPO; RHYTHMIC RATE IS DETERMINED BY THE WORD

WHERE THERE IS NO WORD, THE LENGTH OF SHORT AND LONG IS TO BE DECIDED BY THE PERFORMER

WHERE THERE IS A BREAK, THE PAUSE SHOULD BE INDETERMINATE

IN THE CASE WHERE A CANTOR CANNOT PERFORM, THE ROLE CAN BE FULFILLED BY ANYONE WITH SUFFICIENT KNOWLEDGE OF SOLFEGE

IN AN INSTRUMENTAL SETTING THE CONDUCTOR, CONCERTMASTER, OR PERFORMER WITH THE MOST POWERFUL VOICE SHOULD FULFILL THE ROLE



PLAINCHANT NOTATION

WHEN THERE IS A FOUR LINE STAFF, THE SQUARE NEUME IS THE BASE VALUE, IN REFERENCE TO SOLESMES NOTATION; ITS PITCH IS DETERMINED BY WHERE THE **C CLEF** IS PLACED ON THE FOUR LINE STAFF

CANTOR OR **PLAINCHANT** WILL BE WRITTEN ABOVE THE PART TO DESIGNATE IF THE LINE IS FOR SOLO OR GROUP
THE CANTOR ALWAYS SINGS

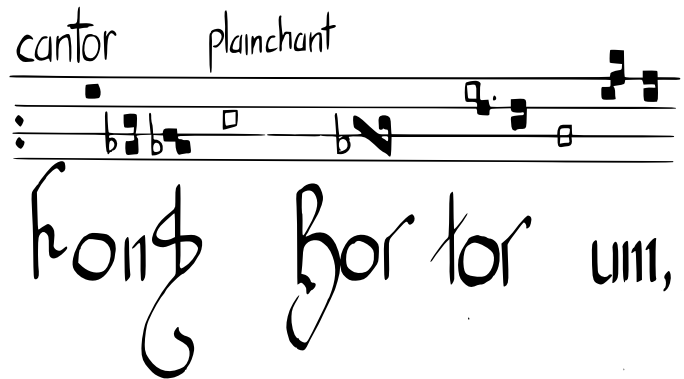
WHEN THE **PLAINCHANT** GROUPING IS SPECIFIED, A **WHITE NEUME** DESIGNATES AN **OPTIONAL DRONE** TO BE HELD UNTIL ANOTHER WHITE NEUME OR THE END OF THE SECTION

THE **PLAINCHANT** GROUPING IS AD HOC; HOWEVER, THREE GROUPINGS ARE RECOMMENDED:

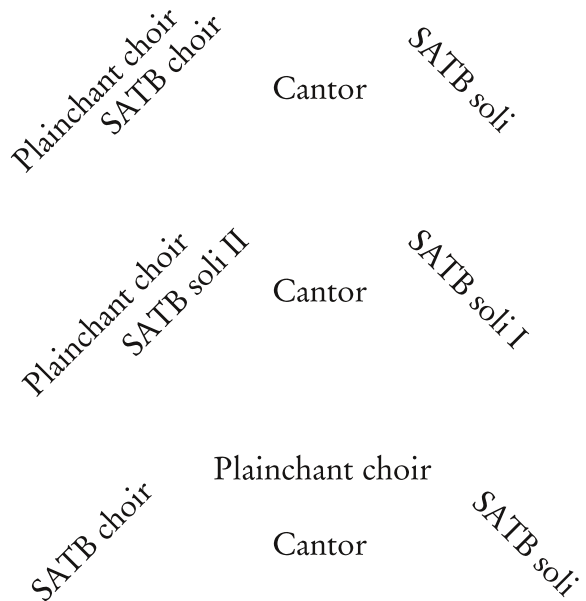
SPLITTING OFF WEAKER SINGERS WHO HAVE TROUBLE WITH CHROMATIC MUSIC INTO A **PLAINCHANT CHOIR**

SPLITTING OFF THE MAJORITY OF THE CHOIR INTO A **SOLI-PLAINCHANT** CONFIGURATION

DIRECTING INSTRUMENTALISTS TO FORM A **UNIQUE PLAINCHANT CHOIR** WHEN TACET



(Assuming all vocal groups are employed)



INSTRUMENTAL NOTATION

THE INSTRUMENTAL FORCES ARE DIVIDED INTO TWO GROUPS, PLACED IN SPATIAL RELATIONSHIP TO THE TEXT IN A "HARMONIC WELL"

THE TOP IS THE **EFFETTO**, WHICH INCLUDES INSTRUMENTS THAT PRODUCE SOUNDS THAT ACT AS SUSTAINED HARMONICS AND OVERTONES, E.G. FLUTE, OBOE, HORN, BOWED STRINGS, ETC

THE BOTTOM IS THE **ARMONIA**, MADE UP OF INSTRUMENTS THAT PRODUCE SOUNDS THAT IMMEDIATELY DECAY, E.G. KEYBOARD, PLUCKED STRINGS, PERCUSSION, ETC

A SMALL FIVE LINE STAFF, THE **FIRMUS**, MAY APPEAR, WHICH IS PERFORMED BY INSTRUMENTS THAT CAN PRODUCE ALTERNATIVE PITCH INTONATIONS

THESE ARE ANCHORED TO THE TEXT THEY ARE SET IN RELATIONSHIP TO

THEY OCCUR ACCORDING TO THE TEXT, NOT THE PULSE

THE **ARMONIA** WILL DECAY NATURALLY, BUT THE **EFFETTO** WILL LAST FOR THE LENGTH OF THE LINE IN RELATION TO THE TEXT, SO IT COULD BE THE FIRST SYLLABLE, THE WHOLE WORD, OR EVEN UP TO THE FOLLOWING WORD



EFFETTO

THE ROOT PITCH IS PERFORMED ACCORDING TO THE TEXTURAL MODIFICATION

WHEN MULTIPLE OPTIONS ARE APPLICABLE, THE CHOICE IS UP TO THE PERFORMER

ALL SOUNDS SHOULD BE AT A DYNAMIC LEVEL THAT **MELDS INTO THE SOUND OF THE WORD**, AS MUCH AS THE EFFECT ALLOWS. THE MUSIC SHOULD BE EMBEDDED WITHIN THE WORD AS **ONE COMPLEX HARMONIC TEXTURE**

natural harmonic

B°

artificial harmonic, specified according to 3rd/4th/5th

$[^{\circ}3]$

harmonic series

$[^{\text{harm}}$

alternative articulation, defined by comment

$[^{\text{alt like alt}}$

multiphonic or multi stop

$[^{\text{chord}}$

ARMONIA

THE HARMONIC VALUES ARE WRITTEN ACCORDING TO STANDARD CHORD NOTATION (I.E. AS ON A LEAD SHEET)

THE VOICINGS ARE TO BE FIGURED AND PERFORMED AT THE **DISCRETION** AND ACCORDING TO THE **TASTE** OF THE PLAYERS

A PITCH SHOULD HAVE AN **EMPHASIZED ATTACK** AND THEN BE ALLOWED TO **DECAY NATURALLY**

FIRMUS

ALL OF THESE NOTES HAVE RECOMMENDED **ALTERNATIVE INTONATION** DESIGNATED IN **CENT DIFFERENCE FROM EQUAL TEMPERAMENT**

THESE HARMONIZE THE INTONATION OF THE CANTOR, AND SHOULD BE PLAYED AS A **PURE TONE**

Handwritten musical notation for Firmus, consisting of four staves. The first two staves show notes with cent differences: +7.82, +41.05, +17.59, +4.77, and -23.46. The third staff shows notes with cent differences: +15.64 and -7.82. The fourth staff shows notes with cent differences: +7.82. The notation includes a treble clef, a key signature of one sharp (F#), and a common time signature (C). The notes are written in a stylized, handwritten font. There are also some decorative flourishes and a large, stylized symbol on the right side of the notation.

HORTUS CONCLUSUS SOROR MEA, SPONSA, HORTUS
CONCLUSUS, FONSI SIGNATUS.

FONS HORTORUM, PUTEUS AQUARUM VIVENTIUM,
SURGE, AQUILO, ET VENI, AUSTER: PERFLA HORTUM
MEUM, ET FLUANT AROMATA ILLIUS.

hortus conclusus.

hortus signatus.



hortus hortorum:

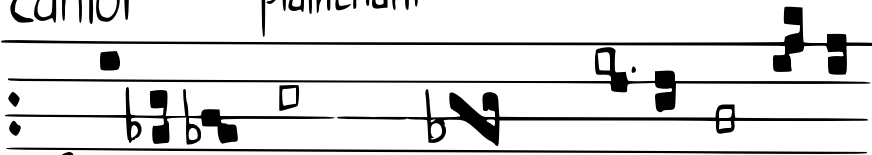
cantor

The musical notation is written on a five-line staff. The word "cantor" is written above the staff. The notation consists of square notes on the top line and a colon on the bottom line. The first measure contains five notes, and the second measure contains four notes.

Gortus condusus Goro meth,

Spensa, hortuſ conductuſ,

cantor plainchant



honnor hor tot un, sicutus

firmus-effetu-

G⁰⁵
G^b

+1.95 -11.73 +1.95 +15.84 sim. +39.1 +5.86

firmus -

ff *firmum* *diventium,*

+3.91 +7.82 sim. sim. -7.82

+13.68 -11.73 +13.68 +7.82

Surge,

— effetto —
— firmus — crinina —

alt tratto

0

firmus

8

-7.82

-3.91

ff pulio, et rem, fuster:

-7.82 -31.28

4

Handwritten musical score with lyrics and numerical annotations. The score consists of four staves, each labeled "firmus" on the left. The lyrics are written in red ink across the staves.

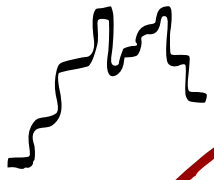
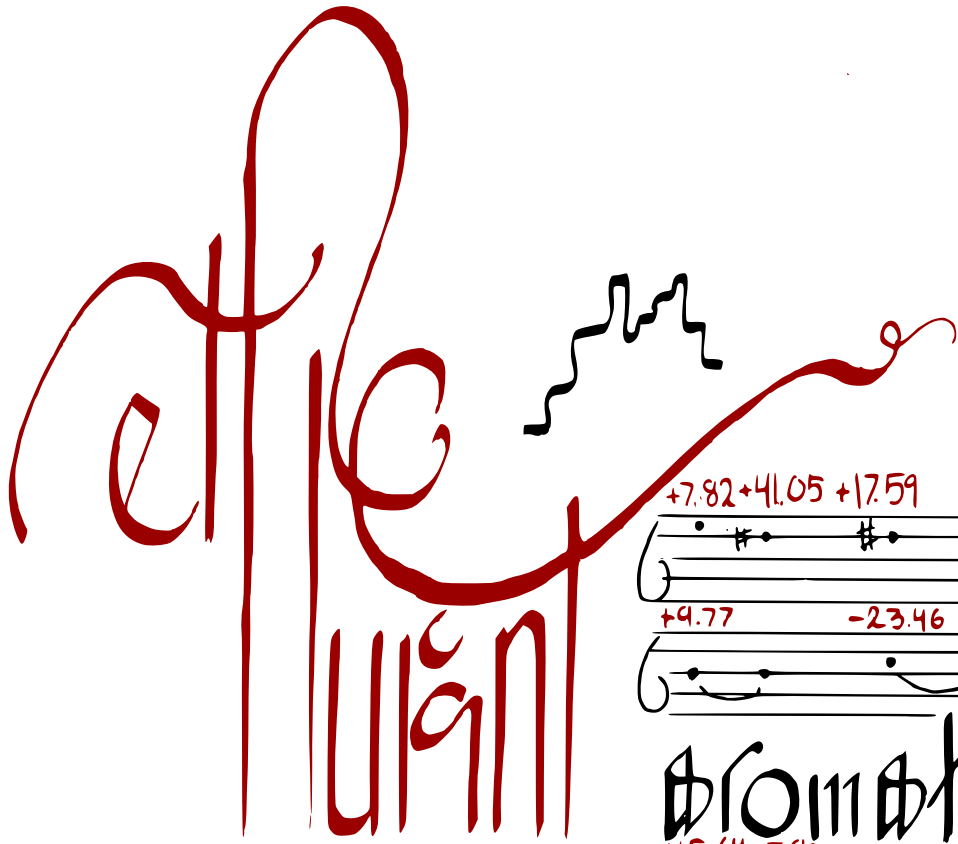
Staff 1: Contains a single note with a red numerical annotation $+1.95$ above it. The word "firmus" is written vertically to the left of the staff.

Staff 2: Contains a single note with a red numerical annotation -27.37 above it. The word "firmus" is written vertically to the left of the staff.

Staff 3: Contains the lyrics "perfla", "bortum", and "meum," written in red. The word "firmus" is written vertically to the left of the staff. Numerical annotations -25.41 , -7.82 , and $+37.14$ are placed above the notes.

Staff 4: Contains the lyrics "E♭" written in red. The word "firmus" is written vertically to the left of the staff. Numerical annotations $+17.54$ and $+13.68$ are placed above the notes.

Additional annotations include "A°" and "D⁰⁴" written in red above the staves, and "E♭" written in red at the end of the fourth staff.



— firmus —

— firmus —

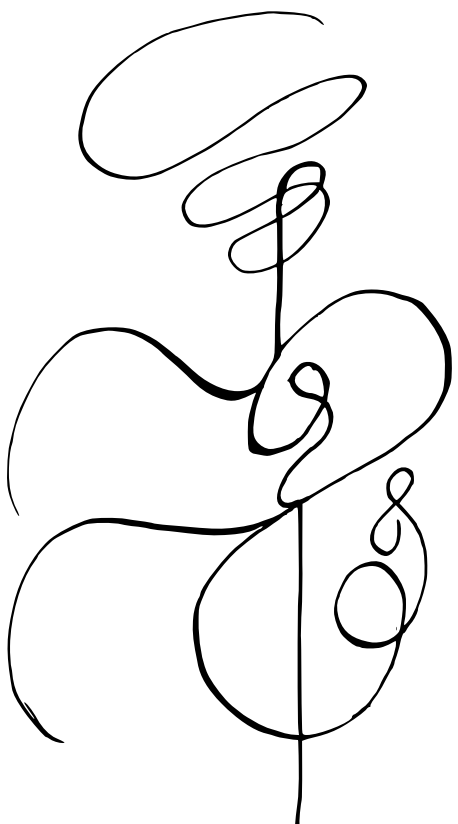
+7.82 +41.05 +17.59

+9.77 -23.46

chromatic plus

+15.64 -7.82

+7.82



10/12-30/22