



Handwritten cursive letter 'S' with a vertical line through it.

Handwritten cursive letter 'S' with a vertical line through it.

Handwritten cursive letter 'S' with a vertical line through it.

4-27-22
5-12-22

CANTOR NOTATION

BLACK SYLLABLES ARE SPOKEN
TONES

RED SYLLABLES ARE INTONED
TONES

THEY ARE DETERMINED BY THE
PITCH OF THEIR RESPECTIVE
VOWELS.

THERE IS NO TEMPO; RHYTHMIC
RATE IS DETERMINED BY THE
WORD

WHERE THERE IS NO WORD, THE
LENGTH OF SHORT AND LONG IS
TO BE DECIDED BY THE
PERFORMER

WHERE THERE IS A BREAK, THE
PAUSE SHOULD BE
INDETERMINATE

CHANT NOTATION

AS IN THE CANTOR, THE BLACK NEUME IS THE BASE VALUE; ITS PITCH IS DETERMINED BY WHERE THE **C CLEF** IS PLACED ON THE FOUR LINE STAFF.

THERE IS NO TEMPO; RHYTHMIC RATE IS DETERMINED BY THE **WORD**

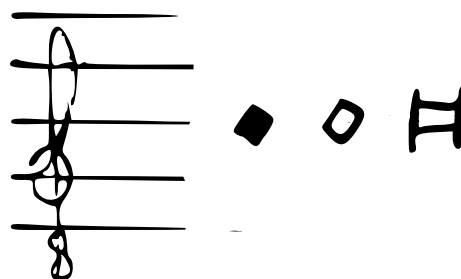
WHERE THERE IS A WORD, NEUMES WITHOUT DOTS ARE SHORT, NEUMES WITH DOTS ARE LONG



VOICE NOTATION

POLYPHONIC VOICES ARE PLACED ON THE FIVE LINE STAFF IN DIAMOND NEUME NOTATION, REPRESENTING SHORT, LONG, AND LONGEST IN A STANDARD **4:2:1** RATIO

THE TEMPO IS ACCORDING TO A SLOW TACTUS, WITHOUT ANY RHYTHMIC MENSURATION OR METRIC STRESS, ROUGHLY **QUARTER NOTE = c.53-56**



INSTRUMENTAL NOTATION

THE INSTRUMENTAL FORCES ARE DIVIDED INTO TWO GROUPS, ONE EACH TO A STAFF, PLACED IN SPATIAL RELATIONSHIP TO THE TEXT

THE TOP, EQUIVALENT TO THE SOPRANO STAFF, IS THE **EFFETTO CONTINUO**, WHICH INCLUDES HIGH WOODWINDS, HIGH STRINGS, HORNS, ET AL

THE BOTTOM, EQUIVALENT TO THE BASS STAFF, IS THE **BASSO CONTINUO**, MADE UP OF THE LOW WOODWINDS, LOW STRINGS, KEYBOARD, AND MISC. CHORDOPHONES

THE SOPRANO AND BASS LINES ARE **DETACHED FROM THE TEXT**: IF THERE ARE VOICES FOR THE RESPECTIVE PARTS THEY COULD BE WORDLESS, BUT THEY ALSO COULD FOLLOW THE WORD, ALBEIT AT A MORE INDETERMINATE RATE

IN GENERAL, THE RULE OF THUMB IS THAT THESE TWO STAVES DO NOT REQUIRE SINGERS, BUT THEY CAN BE DEPLOYED IF AVAILABLE

Chord

re citi

1 or

11 5 #6 #6 8 5
9 3 5 4 #5 #3
4 #2 2 2

EFFETTO CONTINUO

THE ROOT PITCH IS PERFORMED BY A **SOLO INSTRUMENT** OR A **SOPRANO VOICE**, IF AVAILABLE

strings play a harmonic a 5th or 4th above the root pitch, in cases of both they may choose

5
4

THE REMAINING INSTRUMENTS PERFORM WHEN A SYMBOL DICTATES

instruments capable of natural harmonics, e.g. flutes, play root pitch

o

WHEN MULTIPLE OPTIONS ARE APPLICABLE, THE CHOICE IS UP TO THE PERFORMER

horns play root pitch natural, e.g. its equivalent in the harmonic series

h

instruments capable of multiphonics, e.g. oboes, play based on root pitch

chord

BASSO CONTINUO

THE ROOT PITCH IS PERFORMED BY A **SOLO INSTRUMENT** OR A **BASS VOICE**, IF AVAILABLE

THE HARMONIC CONFIGURATIONS ARE PERFORMED AT THE DISCRETION OF THE REMAINING PLAYERS

THE CONTINUO NOTATION IS TO BE READ IN RELATIONSHIP TO THE ROOT PITCH, I.E

C NATURAL WITH A **5** MEANS A PERFECT FIFTH ABOVE, THUS **G** WITH A **#6** MEANS A RAISED SIXTH, THUS **A#** ETC

	G	G#	G#
	G#	D	F#
	D	C#	E
D	C#	B	

Ī RECITĀ! CANAT SĪ COR, TU QUŌ QUE CANĀS CANTUM SUAVE
SPĪRITUS, VĒRUM COELŌ, ĀĒR Ā ANIMŌ
QUASI CANTUS PLĀNUS EX LINGUĪS SĪCUT CHRŪSOS
RECITĀ, COR MEUM, Ī, TU QUŌQUE CANĀS

GO, SPEAK! IF THE HEART MAY SING, YOU TOO MAY SING A SONG SWEETLY
A BREEZE, TRUTH FROM HEAVEN, AIR OUT OF THE SOUL
AS IF A PLAINSONG FROM TONGUES LIKE GOLD
SPEAK, MY HEART, GO, YOU TOO MAY SING

1 recita! **CRUKT** 31 cor,

tu quoque cenax centum



A musical staff with a treble clef. It contains several notes and rests. Red fingerings are written below the notes: '0' above the first note, '4' below the second, '5 4' below the third, and '5' below the fourth. There are also red '0' symbols above the first and fourth notes.

שָׁרִיתוּ

A musical staff with a treble clef, showing a sequence of notes and rests.

A musical staff with a treble clef, showing a sequence of notes and rests.

שִׁירֵי

A musical staff with a treble clef, showing a sequence of notes and rests.

שָׁרִיתוּ שָׁרִיתוּ

A musical staff with a bass clef, showing a sequence of notes and rests.

8 #9 8

A musical staff in treble clef with a key signature of one sharp (F#). The notes are: F#4 (quarter), G4 (quarter), A4 (quarter), B4 (quarter), C5 (quarter), D5 (quarter), E5 (quarter), F#5 (quarter). Red annotations include 'h' under the first note, 'o' above the fourth note, 'chord' above the fifth note, and 'o5' under the eighth note.

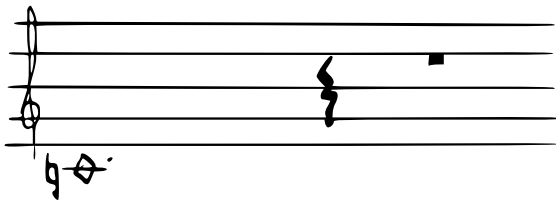
SERUM, **HER**

A musical staff in treble clef with a key signature of one sharp (F#). The notes are: F#4 (quarter), G4 (quarter), A4 (quarter), B4 (quarter), C5 (quarter), D5 (quarter), E5 (quarter), F#5 (quarter). A red annotation '#5' is placed under the eighth note.

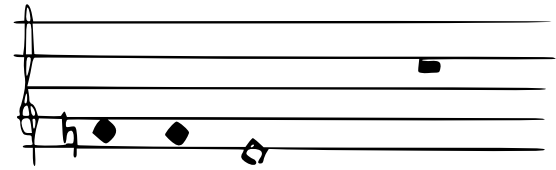
A musical staff in treble clef with a key signature of one sharp (F#). The notes are: F#4 (quarter), G4 (quarter), A4 (quarter), B4 (quarter), C5 (quarter), D5 (quarter), E5 (quarter), F#5 (quarter). A red annotation '#5' is placed under the eighth note.

TUS, **COELO** **IS**

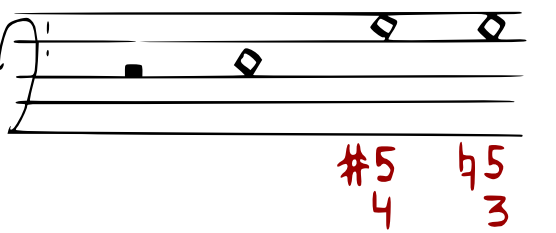
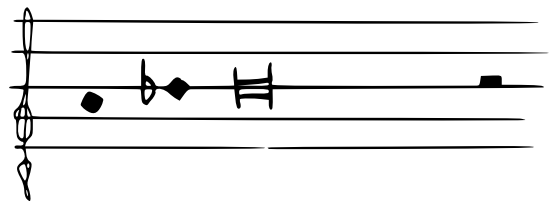
A musical staff in bass clef with a key signature of one sharp (F#). The notes are: F#3 (quarter), G3 (quarter), A3 (quarter), B3 (quarter), C4 (quarter), D4 (quarter), E4 (quarter), F#4 (quarter). Red annotations include '#11 7' under the first note, '#5' under the second note, '#7 6' under the fourth note, and '#6' under the fifth note.



Knim



Knim

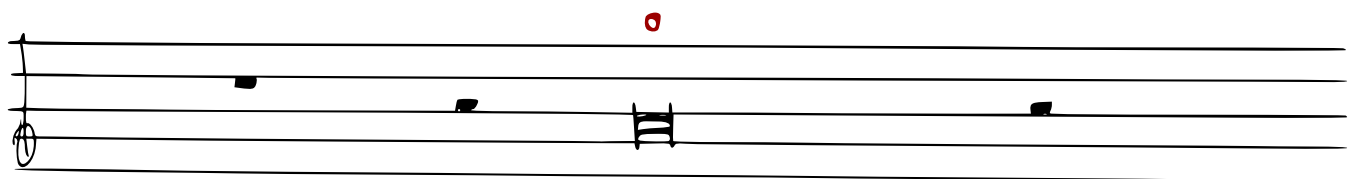




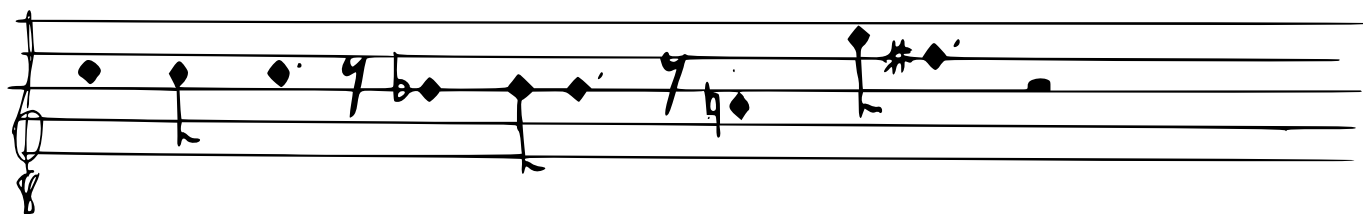
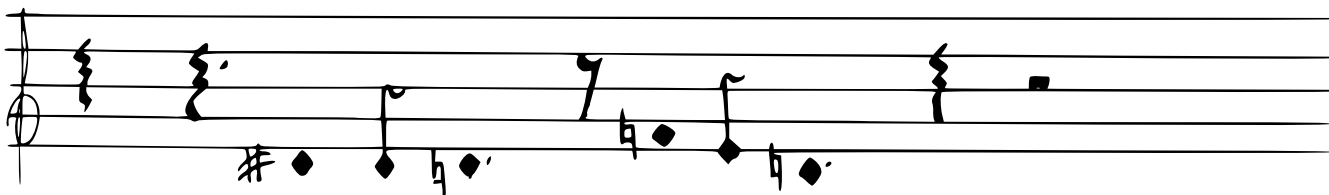
RECITIV, COR MEUM, I,



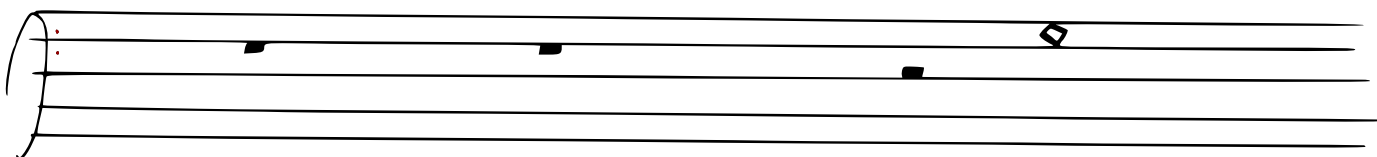
The image shows a musical staff with five horizontal lines. Four square notes are placed on the staff: the first note is on the first line, the second on the second line, the third on the third line, and the fourth on the fourth line. The notes are arranged in a sequence that corresponds to the text 'RECITIV, COR MEUM, I,' below them.



recitis recitis



recitis recitis recitis

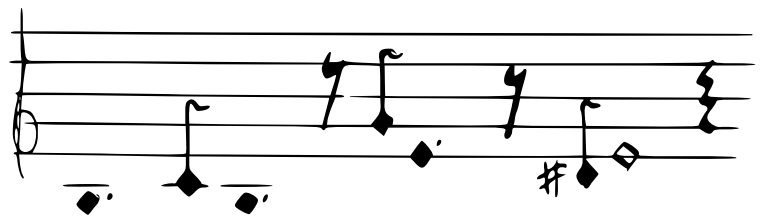


chord

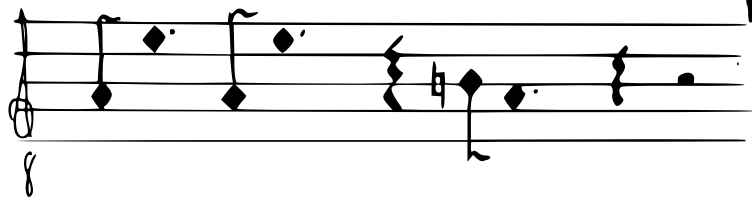


h
5 4
5 4

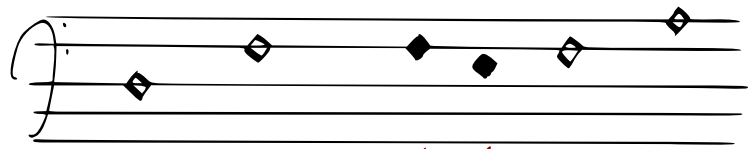
re citis



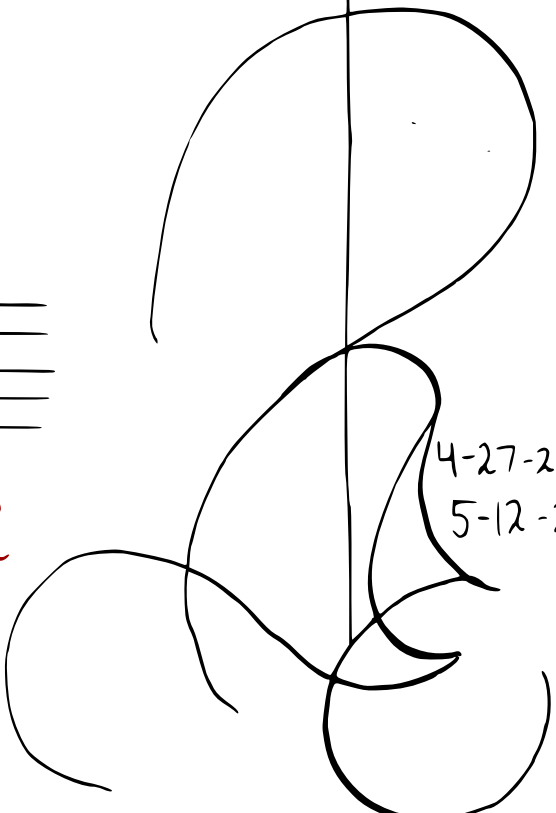
tu quodque **CITIS**



I or



11 5 #6 #6 8 5
9 3 5 4 #5 #3
4 2 2 2



4-27-22
5-12-22